



## Sailing Instructions

### CHANGES TO SAILING INSTRUCTIONS

- 1.1 Any changes to the Sailing Instructions made prior to the pre-race briefing will be notified at the briefing and posted on the Official SSANZ Noticeboard on the website.
- 1.2 For all subsequent changes, "L" Flag (A notice to competitors has been posted) will be displayed and any change will be announced verbally to yachts during the check in period via VHF CHANNEL 77 prior to the start and posted on the Official SSANZ Noticeboard on the website.

### SCHEDULE OF EVENTS

- 2.1 Briefing: Thursday 11th July 2024 7pm - at the RNZYS
- 2.2 Racing Schedule:
  - Lewmar 60 - Saturday 13th July 2024
  - Lewmar 100 - Saturday 10th August 2024
  - Lewmar 50 - Saturday 7th September 2024
- 2.3 Prize Giving – Friday 20th September 2024

### CLASS FLAGS AND DIVISIONS

- 3.1 Division pennants shall be flown from the backstay or port shroud if no backstay is fitted.
- 3.2 Division flag shall be a minimum size of 200mm x 200mm.
- 3.3 Failure to exhibit the division flag may render a yacht being recorded as "Did Not Start".

Division	Class	Start	Flag
New World Victoria Park 1	Monohull PHRF	0900-Start Alpha	Yellow
New World Victoria Park 2	All without PHRF Handicap	0900-Start Alpha	Green/White
New World Victoria Park PP	Pied Piper	0900-Start Bravo	PP Class Flag
<b>ALL Boats in the New World Victoria Park Divisions will start under the New World Flag</b>			
Safety at Sea 1	Monohull PHRF .786 and above	0915-Start Alpha	Royal Blue
Safety at Sea 2	Monohull PHRF .785 and below	0915-Start Alpha	Light Blue
<del>Safety at Sea 3</del>	<del>Monohull - No Extras PHRF</del>	<del>0915-Start Alpha</del>	<del>Pink</del>
Safety at Sea 88	Young 88	0915-Start Bravo	Y88 Class Flag
<b>ALL Boats in the Safety at Sea Divisions will start under the Safety at Sea Flag</b>			
Beacon Marine 1	Monohull PHRF .860 and above	0930-Start Alpha	White
Beacon Marine 2	Monohull PHRF .700 to .859	0930-Start Alpha	Green
Beacon Marine M	All Multihulls	0930-Start Bravo	White/Yellow
<b>ALL Boats in the Beacon Marine Division will start under the Beacon Marine Flag</b>			
New World Victoria Park 3	Monohull - No Extras without PHRF	0945 - Entire Line	Pink
<b>ALL Boats in New World Victoria Park 3 will start under a Pink Flag</b>			

## MARKS AND COURSES

- 4.1 The Race Officer has the right to alter any course for any division on the day of racing up until the preparatory signal for that division, this will be advised by flying the "L" Flag.  
(A notice to competitors will be posted and there may be verbal instruction on VHF 77).
- 4.2 **Lewmar 60 - Beacon Marine Course 1:** approx. 61 nm  
Start, rounding Rangitoto (S), Awash Rock Rakino (P), Otata Island (Noises) (P), Flat Rock (P), Motuora Island (P), passing Tiritiri Island (S), rounding Northern Leading Buoy (S) to Finish
- Lewmar 60 - Safety at Sea Course 4:** approx. 52 nm  
Start, rounding Rangitoto (S), Haystack (P), Motuora Island (P), passing Tiritiri Island (S), Northern Leading Buoy (S), to Finish
- Lewmar 60 - New World Victoria Park Course 7:** approx. 36 nm  
Start, rounding Rangitoto (S), Awash Rock Rakino (P), Otata Island (Noises) (P), Shearers Rock Cardinal Buoy (P), Northern Leading Buoy (S), to Finish
- 4.3 **Lewmar 100 - Beacon Marine Course 2:** approx. 105 nm  
Start, passing Rangitoto (S), rounding Motuora Island (S), Tiritiri Matangi Island (P), Flat Rock (S), D'Urville Rock (P), Motutakupu (Gannet) Island (S), passing Waiheke Island (P), Motutapu Island (S), Northern Leading Buoy (P) to Finish.
- Lewmar 100 - Safety at Sea Course 5:** approx. 64 nm  
Start, passing Rangitoto (S), rounding Flat Rock (S), Horuhoru (Gannet) Rock (S), passing Waiheke Island (P), passing Motutapu Island (S), Northern Leading Buoy (P) to Finish.
- Lewmar 100 - New World Victoria Park Course 8:** approx. 52nm  
Start, passing Rangitoto (S), rounding Flat Rock (S), passing Rakino Island (P), passing Motutapu Island (S), Northern Leading Buoy (P) to Finish.
- 4.4 **Lewmar 50 - Beacon Marine Course 3:** approx. 55 nm  
Start passing Waiheke Island (S), Cow and Calf Islands (S), Pakatoa Island (P), Waiheke Island (S), passing Motuihe Island (S), to Finish (Islington Bay entrance).
- Lewmar 50 - Safety at Sea Course 6:** approx. 40 nm  
Start passing Waiheke Island (S), Tarahiki (Shag) Island (S), Pakatoa Island (P), Waiheke Island (S), passing Motuihe Island (S), to Finish (Islington Bay entrance).
- Lewmar 50 - New World Victoria Park Course 9:** approx. 30 nm  
Start passing Motutapu (P), rounding Motuhoropapa Island (The Noises) (S), Ahaaha Rocks (S), D'Urville Rock (S), Motuihe Island (S) to Finish (Islington Bay area)

- 4.5 In the case of unfavourable weather, the SSANZ Committee Boat may fly Code Flag S in which case some or all divisions shall sail a short course. Divisions to sail the Short Course will be advised which short course from the list below prior to the start on VHF Ch 77.

Short Courses:

**Lewmar Short Course 10:** approx. 44 nm

Start passing Rangitoto (S) rounding Navy Buoy Whangaparaoa (S), D'Urville Rock (S), Motuihe Island (S), Northern Leading Buoy (P), Finish

**Lewmar Short Course 11:** approx. 34 nm

Start passing Rangitoto Island (S), rounding Rakino Island (S), D'Urville Rock (S), Motuihe Island (S), Northern Leading Buoy (P), Finish

**Lewmar Short Course 12:** approx. 25 nm

Start passing Rangitoto Island (S), rounding Rakino Island (S), Motuihe Island (S), Northern Leading Buoy (P), Finish

**Lewmar Short Course 13:** approx. 21 nm

Start passing Rangitoto Island (S), rounding Motutapu Island (S), Northern Leading Buoy (P), Finish

**Lewmar Short Course 14:** approx. 33 nm

Start, passing Motutapu (P), rounding D'Urville Rock (P) Motuhoropapa Island & Otata Island (The Noises) (P), Rakino Island (P), passing Motutapu Island (S), Northern Leading Buoy (P), Finish

**Lewmar Short Course 15:** approx. 30 nm

Start, passing Browns Island Beacon (S), rounding Motuihe Island (P), D'Urville Rock (P), passing Motutapu Island (S), Northern Leading Buoy (P), Finish

**Lewmar Short Course 16:** approx. 24 nm

Start, passing Browns Island Beacon (S), rounding Rocky Bay Buoy (P), Motuihe Island (P), Northern Leading Buoy (P), Finish

**Lewmar Short Course 17:** approx. 15 nm

Start, passing Browns Island Beacon (S), Motuihe Island (P), Northern Leading Buoy (P), Finish

**Lewmar Short Course 18:** approx. 10 nm

Start, passing Browns Island Beacon (S), Browns Island Navy Buoy (P), Iliomama Buoy (P), Northern Leading Buoy (P), Finish

- 4.6 Safety at Sea 88 Young 88 division will race the following courses, always starting off the Safety at Sea Start

**Lewmar 60 - Safety at Sea Course**

**Lewmar 100 - New World Victoria Park Course**

**Lewmar 50 - Safety at Sea Course**

- 4.7 Beacon Marine M division All Multihulls will race the following courses, always starting off the Beacon Marine Start.

**Lewmar 60 - Beacon Marine Course**

**Lewmar 100 - Safety at Sea Course**

**Lewmar 50 - Beacon Marine Course**

## THE START

- 5.1 Races will be started using RRS 26 with the warning signal made 5 (five) minutes before the starting signal.
- 5.2 The start line will be between a staff displaying an orange flag on the SSANZ Committee Boat and the Northern Leading Harbour Racing Buoy, with the SSANZ Buoy\* splitting the line to form 2 sections. The Committee boat will be at the starboard end of the line.  
Start Alpha (A) will be between the SSANZ Committee Boat and the laid SSANZ Buoy.  
Start Bravo (B) will be between the SSANZ Buoy and the Northern Leading Harbour Racing Buoy.  
\*The SSANZ Buoy splits the line but does not form part of the line transit.
- 5.3 Inner distance mark (IDM): If laid, yachts shall not pass between the IDM and the SSANZ Committee Boat at any time.
- 5.4 Boats whose warning signal has not been made shall avoid the starting area during the starting sequence for other divisions.
- 5.5 A yacht starting later than 30 minutes after their starting signal will be scored Did Not Start (DNS). This changes RRS A4 and A5.
- 5.6 If a recall is signalled, the Race Committee may attempt to broadcast a yacht's name and/or sail number on VHF Channel 77. Failure to make a broadcast will not be grounds for a request for redress. This changes RRS 62.1(a).
- 5.7 The Race Officer may abandon racing after 1500 hrs on the day for any reason.

## THE FINISH

- 6.1 Lewmar60 and Lewmar100 finish line will be between a staff displaying a blue flag on the SSANZ Committee Boat with an orange strobe and Resolution Buoy (Ref Appendix B)  
The finish line will be positioned approximately North to South with the finish boat at the south end of the line. (Be advised that the depth shallows rapidly south of this line).
- 6.2 Lewmar50 race finish line will be positioned off the entrance to Islington Bay between a staff displaying a blue flag on the SSANZ Committee Boat with an orange strobe and the laid Yellow SSANZ Buoy with a strobe attached. (Ref Appendix C)  
The finish line will be positioned approximately Northeast to South West with the finish boat at the Northeast end of the line.  
(Be advised of the shallow depth in the area East of the finish of Motutapu Island between Emu point and the finish).
- 6.3 It is each yacht's responsibility to identify itself and be acknowledged by the race committee when finishing. At night yachts must illuminate their sail numbers.  
You must take your own time using GPS time if you are unable to get an acknowledgement from the Race Committee.  
This time will need to be emailed to [racing@ssanz.co.nz](mailto:racing@ssanz.co.nz) as soon as possible after finishing.  
The email must include your Boat Name and Sail Number with your finish time, and if possible, the time and name of a boat finishing near you.

## TIME LIMITS

- 7.1 Lewmar 60 1200 hrs Sunday 14th July 2024  
Lewmar 100 1400 hrs Sunday 11th August 2024  
Lewmar 50 2200 hrs Saturday 7th September 2024
- 7.2 Boats not finishing within the time limits will be scored Did Not Finish. This changes RRS 35 and A4.
- 7.3 If the start is postponed, the time limits above will be extended by the amount of the postponement period.

## RACE POSTPONEMENTS

- 8.1 The Race Officer may postpone by any amount of time that they see fit.
- 8.2 The Race Officer may also make a postponement whereby the start will not take place before a certain time.
- 8.3 In the event a postponement is made more than 3 hours before the first scheduled start, this will be announced on VHF Channel 77 and posted on the SSANZ Official Noticeboard on the website.

## SAFETY REGULATIONS

- 9.1 All forms of navigational aids, GPS, radar, autopilots, etc are permitted. GPS should be regarded as a navigational aid, not a navigational system.

## EQUIPMENT AND EQUIPMENT CHECKS

- 10.1 A boat or equipment may be inspected at any time for compliance with the class rules, sailing instructions and safety certificates. On the water, a boat can be instructed by a Race Committee Equipment Inspector or Measurer to proceed immediately to a designated area for inspection.

## RADIO REGULATIONS

- 11.1 All yachts MUST identify themselves as starters to the Race Officer by calling SSANZ Sports Radio on Channel 77 prior to the start and must receive acknowledgement from the race committee.  
If there is an issue with Channel 77, competitors may be required to use Channel 04.
- 11.2 SSANZ will monitor Channel 77 from 0730 until 10 minutes after the last start, and again during the finishing of all competitors.
- 11.3 You will receive a race day text from SSANZ for each of the races  
All boats are required to reply to the SSANZ text after passing and/or rounding the marks identified below.  
Your reply must contain MARK and the mark number you have rounded. For example 'Mark 1'.  
If there is no cellphone coverage at the required report position, text as soon as you have coverage.  
You will receive a confirmation text back from SSANZ.  
In the event you cannot text or do not receive a response from SSANZ you are required to call Coast Guard on VHF 64 or 60 and file a position report.

**Lewmar 60 - Beacon Marine Course**

**Mark 1 - Flat Rock**

**Lewmar 60 - Safety at Sea Course**

**Mark 1 - Motuora Island**

**Lewmar 60 - New World Victoria Park Course**

**Mark 1 - Shearers Rock Cardinal Buoy**

**Lewmar 100 - Beacon Marine Course**

**Mark 1 - Flat Rock, Mark 2 - Motutakupu (Gannet) Is.**

**Lewmar 100 - Safety at Sea Course**

**Mark 1 - Flat Rock, Mark 2 - Horuhoru (Gannet) Rock**

**Lewmar 100 - New World Victoria Park Course**

**Mark 1 - Flat Rock, Mark 2 - Rakino Island**

**Lewmar 50 - Beacon Marine Course**

**Mark 1 - Cow & Calf Islands**

**Lewmar 50 - Safety at Sea Course**

**Mark 1 - Tarahiki (Shag) Island**

**Lewmar 50 - New World Victoria Park Course**

**Mark 1 - D'Urville Rock**

### Short course - Not Applicable

- 11.4 All boats are required to call SSANZ Sports Radio on VHF 77 on the approach to Northern Leading Racing Buoy - This call is not required for the Lewmar 50 race.
- 11.5 All boats must call SSANZ Sports Radio on VHF Channel 77 while on final approach to the finish.  
Failure to make this call may result in a DNF.
- 11.6 A boat that retires from a race shall notify SSANZ via a RETIRED text message, a call to Coastguard on VHF channel 64 or 60 or alternately by phoning the Race Officer as soon as possible after retiring
- 11.7 Yachts failing to comply with all reporting requirements will receive a 5% time penalty for every report they do not complete.
- 11.8 Voicemails and text will not satisfy communication requirements for any race, unless they have been acknowledged with a reply from SSANZ.
- 11.9 A yacht shall not receive radio communications that are not available to all yachts. This restriction applies to mobile telephones. Boats are permitted to communicate with the media for the purpose of publicity and promotion but not to gain information to help their performance.
- 11.10 ALL YACHTS shall maintain a watch on VHF Channel 16 while racing.

## TRASH DISPOSAL

- 12.1 Boats shall not put rubbish in the water.

## ENGINE USE

- 13.1 No yacht shall be under power or tow after their Preparatory Signal.
- 13.2 Yachts are permitted to run their engines during the race for the purpose of charging batteries or other functions (i.e. canting keel, operate winches) but the engine power shall not cause the propeller to rotate.

## DISCLAIMER OF LIABILITY

- 14.1 Competitors participate in all races entirely at their own risk, refer to Rule 4 of the RRS. SSANZ will not accept any liability for material damage or personal injury or death sustained in conjunction with or prior to, during or after the race.

## INSURANCE

- 15.1 Each yacht shall be insured with valid third-party liability insurance with a minimum cover of \$5,000,000 per event.

## TRACKING

- 16.1 Yachts are required to operate a Predictwind tracker on a smartphone or similar device whilst racing.

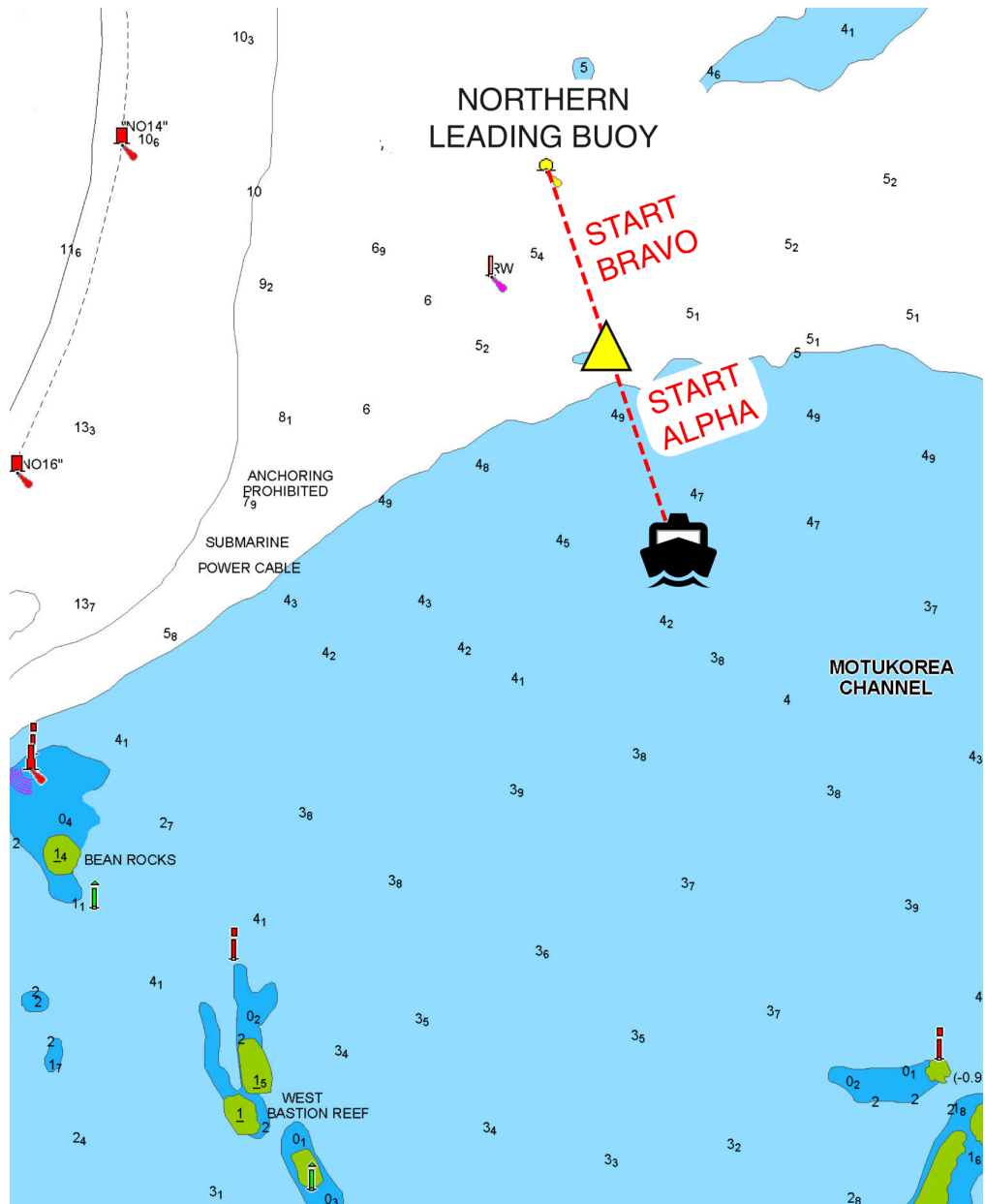
Failure to have your tracker running at the start of the race will result in DSQ

<https://www.predictwind.com/tracker/>

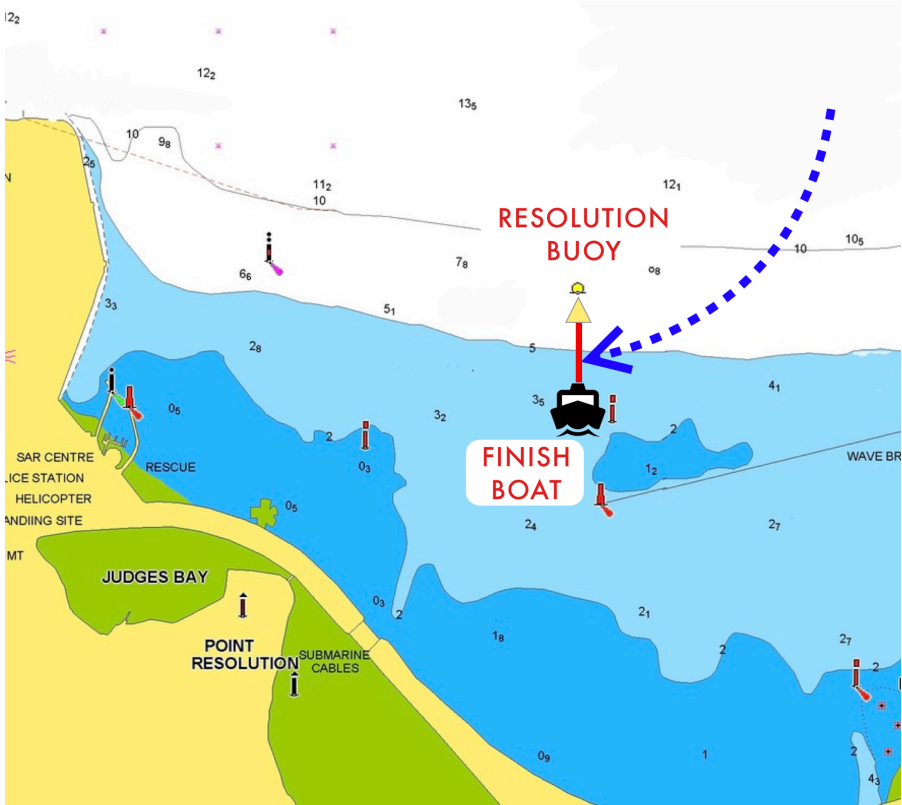
## ADDITIONAL INFORMATION

Official Website: [www.ssanz.co.nz](http://www.ssanz.co.nz)  
Contact Email: [racing@ssanz.co.nz](mailto:racing@ssanz.co.nz)  
Race 1 & 3:  
Garry Jolliffe (Race Officer): Ph: 027 434 8186  
Race 2:  
Nico Henry (Race Officer): Ph: 021 685 347

# Appendix A Start Line



# Appendix B Lewmar 60 & Lewmar 100 Finish Line



# Appendix C Lewmar 50 Finish Line

